

Assembly instructions

Bicycle house, container house, garden house



Metallbau Onlineshop

www.kirchberger-metall.de

1. Bolting the longitudinal beam to the post



All screw connections are numbered consecutively.
Please start the number sequence at 1
screw all connections together.



2. Screwing the roof element to the front and rear sections



Screw the roof element to the front and rear sections according to the numbering.

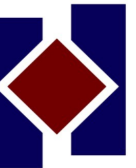
3. Screwing on panelling elements



Screw on panelling elements
(stainless steel or wood)



The panelling is placed on the bracket provided and screwed in place.



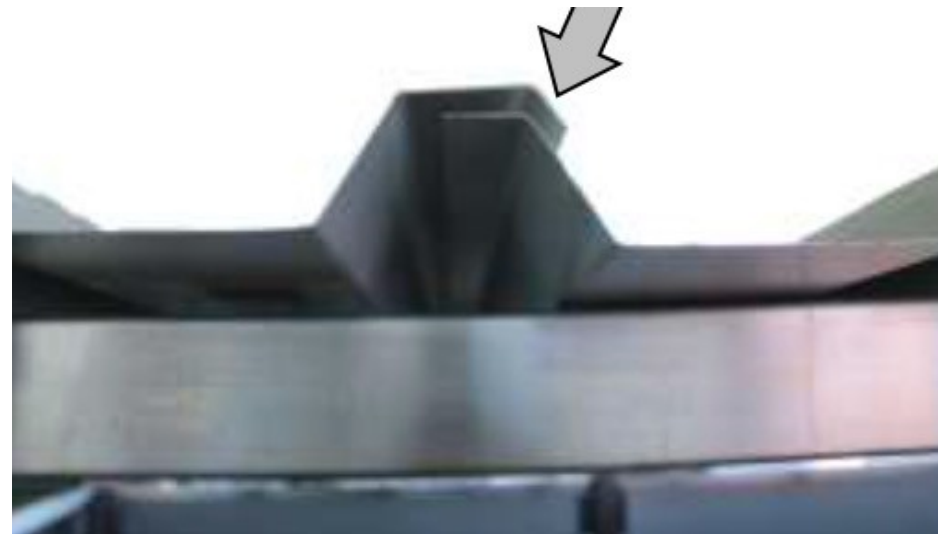
4. Attach trapezoidal sheet metal



Lay the trapezoidal sheet flush on the left and right.
Centre the overhang at the front and rear.

Make sure that the next sheet overlaps with the
previous sheet.

Please attach the follower plate in the same way as
shown in the detail picture to prevent water from
penetrating.

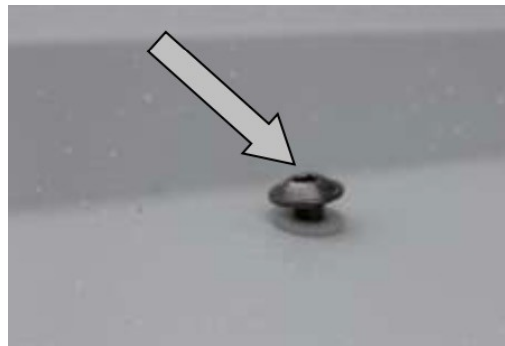


4. Attach trapezoidal sheet metal



Starting from the outside, slide the roof mounting brackets into every second corrugation over the cross tube and drill the hole through the mounting bracket into the roof using a 6 mm drill bit.

Make sure that the roof support brackets are installed so that the drill hole points inwards. See illustration below.



Insert the supplied roof screw with sealing washer from above through the roof and fasten from below with the nut.



5. Fasten to foundation



on the foundation. Ensure that the clear dimension of the door of 125 cm is maintained.



6. Fitting the door



For swing door variant - hang in door.

For the sliding door variant, remove the panelling panel next to the sliding door again if necessary in order to hook the sliding door into the upper guide rail. First insert the sliding door into the lower guide bolt and then guide it into the upper roller carriage and screw it in place.

If you have any questions, our installation team is available at any time by telephone on +49 8221/204191.

